



# Dry Set Mortar (Light-Blue Crocodile)

**Light-Blue Crocodile** Thinset is factory blend of Portland cement, sand, and a unique blend of special additives. Light-Blue Crocodile produces an excellent bond for interior floor & wall installation.

## BASIC USE

**Light-Blue Crocodile** Thin-set is used as a bond coat for setting ceramic tile for service in residential and commercial use for both floor and wall installations. It is used in a bond coat as thin as 2 mm after the tiles have been properly beat in. Light-Blue Crocodile has excellent water and impact resistance, is water cleanable, non-flammable, good for interior work. Light-Blue Crocodile Thin-set provides a permanent installation with excellent bond strength to conventional Portland cement mortar beds.

## AREA OF USE

Light-Blue Crocodile is used over a properly prepared, fresh Portland cement and sand mortar bed.

## LIMITATIONS

Light-Blue Crocodile must not be used directly over wood, asphalt sheeting, vinyl covered wall board, Masonite, cement asbestos board, metal, glass or plastic. Use in temperature ranges above 40 °F (Do not allow mortar to freeze for the first 72 hours.)

## APPLICABLE STANDARDS

Conforms to requirements for Mortar bed installations found in ANSI A108.5-1992.



## INSTALLATION

### PREPARATORY WORK

All surfaces on which tiles are to be set must be dry, structurally sound, and not subject to temperatures below 40 °F or above 100 °F. Detailed installation procedures may be found in the T.C.A. Handbook, and ANSI A108.5 Surfaces must be dry and free of all grease, oil, dirt, dust, curing compounds, sealers, coating, efflorescence, old adhesive residues, gypsum based underlayments and any other foreign matter.

### CEMENTITIOUS SUBSTRATES

Cleaning may be accomplished via mechanical sanding, scraping, or chipping. Surfaces may be cleaned with muriatic acid if thoroughly flushed and neutralized. Smooth steel troweled concrete floors must be roughened to insure a good bond. It is advisable to dampen dry porous concrete before installing ceramic tile with Gator Green mortar. Do not leave puddles or standing water on surfaces.

### NON-CEMENTITIOUS SUBSTRATES

Surfaces such as wood and old plaster or painted surfaces that provide bonding problems should be covered with a cleavage membrane topped with a 3/8" (9.5 mm) to 3/4" (19 mm) reinforced mortar bed for walls and a 1 1/4" (32 mm) reinforced mortar bed for floors. After a minimum cure of 20 hours, the dry-set mortar may be applied to the mortar bed.

Dry Set Mortar (Light-Blue Crocodile)



Cera C-Cure Co.,Ltd.

[www.cera.co.th](http://www.cera.co.th)

102 Soi Rama IX 43 (Seri 4) Suanluang, Suanluang, Bangkok 10250 Tel: (662)0-2720-1000 (Auto) Fax: (662)0-2720-1386-7



# Dry Set Mortar (Light-Blue Crocodile)

## EXPANSION JOINTS

Shall be installed in accordance with local building codes. See EJ 171 in T.C.A. Handbook for detailed specifications. Expansion Joints, control joints and cold joints, shall never be bridged with setting material.

## MIXING

Gator Green dry powder should be added to clean, potable water, at the rate of approximately 4.8 lits per 20 kgs. bag. Mix thoroughly until smooth and let mortar slake for 15 minutes, then remix. If a mechanical mixer is used, it must be done at a low RPM (150) so as not to entrap air into the mortar. Do not add water, latex, or additional powder after slaking period. The proper mortar consistency is such that when applied with a notched trowel to the substrate, the ridges formed in the mortar will not flow or slump. Do not use mortar after initial set in bucket. During use, remix mortar occasionally.

## TECHNICAL DATA

TEST	TYPICAL VALUES	ANSI : A118.1
Setting Time		
- Initial Set	6.3 Hours	> 6 Hours
- Final Set	10.0 Hours	> 9 Hours < 15 Hours
Open Time		
- Opentime @ 22.8°C	> 65 Minutes	≥ 50 Minutes
- Opentime @ 43.3°C	> 35 Minutes	≥ 20 Minutes
Adjustability		
- Adjustability @ 22.8°C	> 35 Minutes	≥ 30 Minutes
- Adjustability @ 43.3°C	> 15 Minutes	≥ 10 Minutes
Bucket Life		
- Bucket Life @ 21.0°C	2 Hours	-
Compressive Strength (ASTM C-109)	>185 ksc	-
Shear Bond (28 Days)		
- Glazed Wall Tile	300 PSI	> 250 PSI
- Impervious Mosaic	165 PSI	> 150 PSI
- Quarry Tile	200 PSI	> 100 PSI
Slake Time	15 Minutes	-
Approx.Coverage (Estimate) (20 kgs.)	5-7 Sqm.	-

## APPLICATION

Spread mortar with flat side of trowel to key-in substrate; then, apply additional mortar to a depth sufficient to be notched with a suitable trowel that will leave only enough mortar to give 100% contact with back of tile and a subsequent mortar bed of 2 mm to 5 mm. With high lug tiles, "back buttering" may be required to ensure 100% coverage to back of tiles. During the setting of tile, it is advisable to occasionally remove a tile to be sure mortar has not skinned over and sufficient transfer is being made. It is also required that tiles be embedded to obtain good transfer of mortar to tile and for proper alignment. Do not adjust tiles in mortar after they have been set past 5 minutes.



Cera C-Cure Co.,Ltd.

102 Soi Rama IX 43 (Seri 4) Suanluang, Suanluang, Bangkok 10250 Tel: (662)0-2720-1000 (Auto) Fax: (662)0-2720-1386-7

[www.cera.co.th](http://www.cera.co.th)

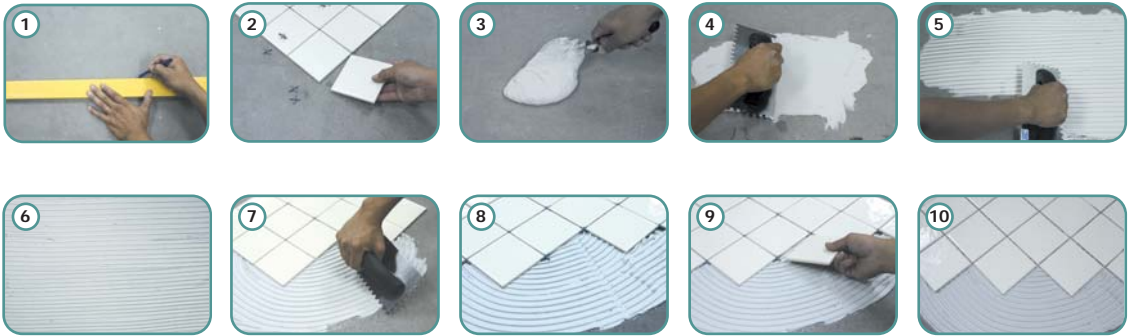
Dry Set Mortar (Light-Blue Crocodile)

T  
R  
O  
O  
P  
I  
C  
A  
N  
T  
I  
L  
E



# Dry Set Mortar (Light-Blue Crocodile)

**NOTE :** As a practical test it is recommended that three or more separate twelve inch square areas of tile be bonded to the properly prepared surface with the actual tile and bonding material that will be used on the finished installation. These should be allowed to cure for three to seven days and then removed with a hammer and chisel. At this point, one can determine if adequate bond has been obtained or if a problem exists.



### CLEANING

Water is all that is needed to remove uncured mortar.

### CURING AND GROUTING

A minimum cure is obtained in 12-24 hours, depending on ambient temperatures. Grouting can be done before the mortar takes its final set if caution is used not to break the plastic mortar bound to the tile. Normal grouting should be done 48 hours later.

### CAUTION

May cause eye, skin or lung injury. Contains free silica. Prolonged exposure to dust may cause delayed lung disease (silicosis). Eliminate exposure to dust. Use NIOSH approved mask for Silica dust. Contains Portland cement. If any cement or cement mixtures get into eye, flush immediately and repeatedly with water, and consult a physician promptly. Freshly mixed cement, mortar, concrete or grout may cause skin injury. Avoid contact with skin where possible and wash exposed skin areas promptly with water.

**KEEP OUT OF REACH OF CHILDREN.**

### STORAGE LIFE

One year if kept dry in sealed bag.

### PACKAGING

Packaging - 20 kgs. multi-wall bags. Item No1085



American Quality Products from Crocodile Family



Cera C-Cure Co.,Ltd.

102 Soi Rama IX 43 (Seri 4) Suanluang, Suanluang, Bangkok 10250 Tel: (662)0-2720-1000 (Auto) Fax: (662)0-2720-1386-7

[www.cera.co.th](http://www.cera.co.th)

Dry Set Mortar (Light-Blue Crocodile)